

Modelled Frost Risk

Frost risk map for the SEIS prepared for Tasmanian Irrigation Pty Ltd

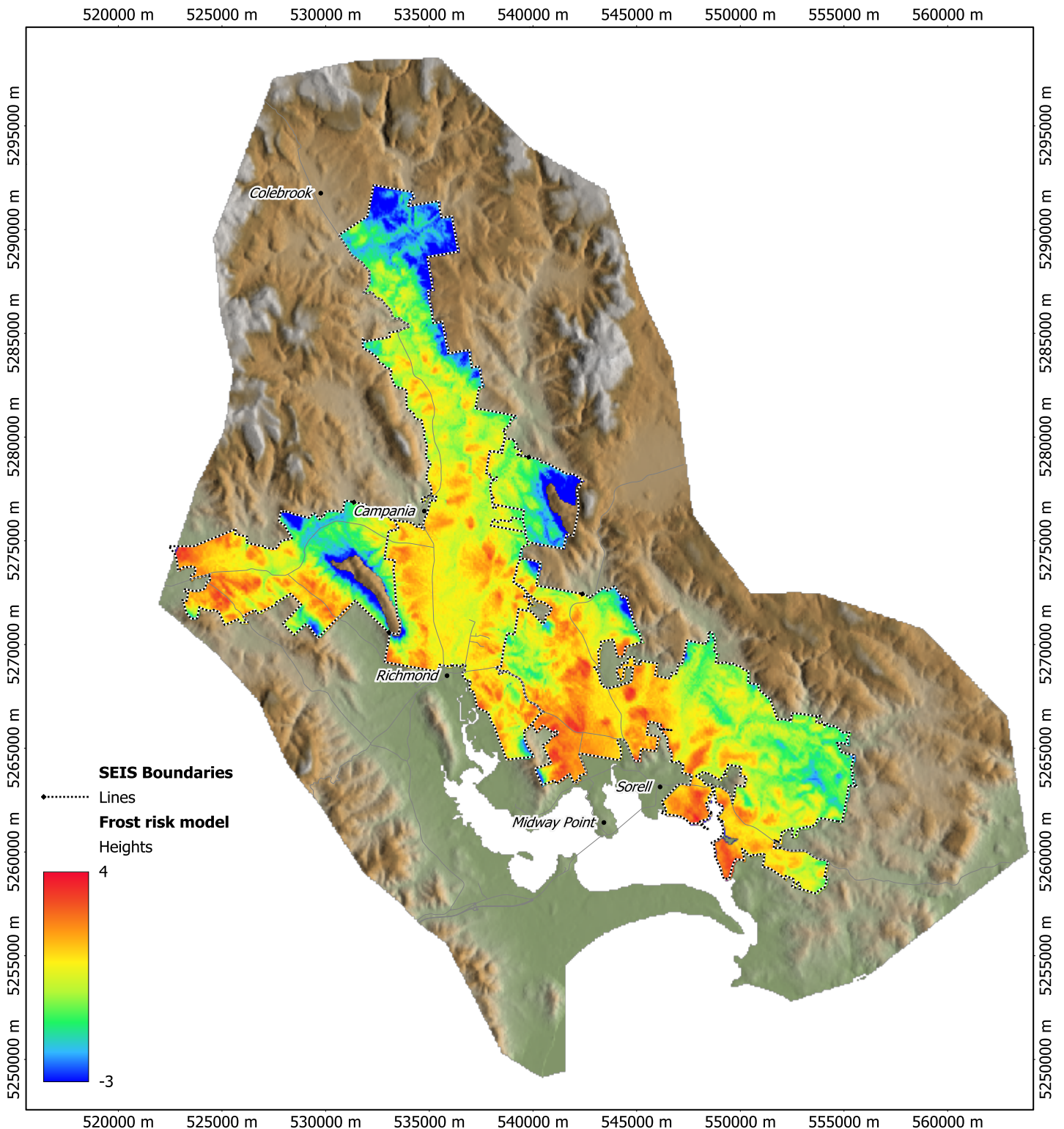
Mobile measurements were made on several cool mornings. Temperature was measured at 2 m above the road surface. Measurements were corrected for differences in time and daily conditions.

Model was developed from regression against DEM and derived indices. Model fit - $R^2 = 0.49$

Units are arbitrary, with higher values linked to higher minimum temperatures.

Frost is highly dependent on local topography and there may be frost even in areas marked Low Risk. This map is not intended to be used for property-scale planning. If frost risk is suspected advice from a frost specialist is highly recommended.

Background map- Digital Elevation Model (1 second STRM, Geoscience Australia)



Copyright Ag Logic, 2012

Ag Logic accepts no responsibility for loss, damage or injury resulting from the use of this map.