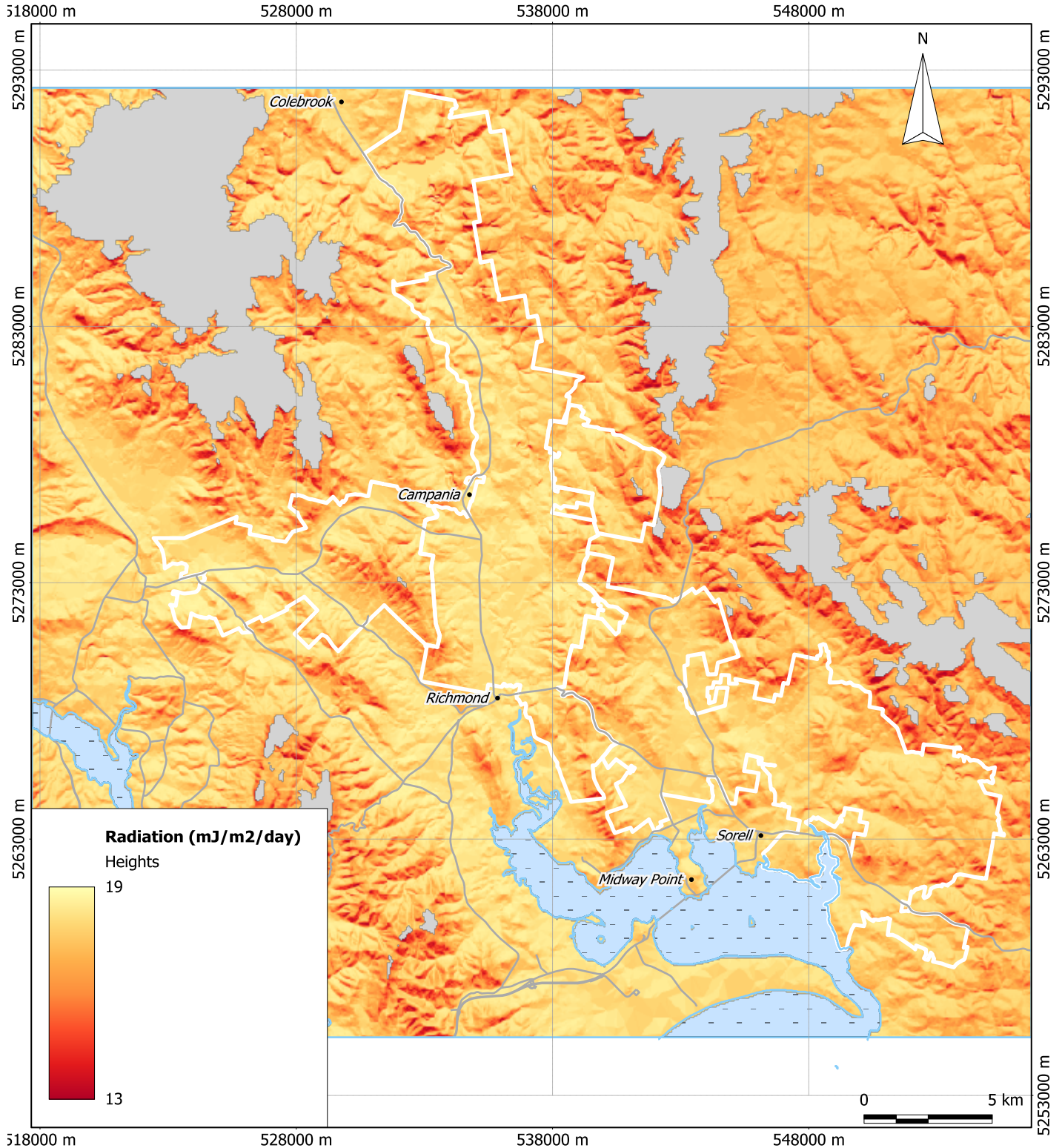


Intercepted Radiation ($\text{mJ}/\text{m}^2/\text{day}$)

Base data - ESOCLIM derived intercepted radiation surface (includes adjustment for aspect and rainfall).
ESOCLIM climate surfaces were generated with the ANUCLIM 5 software package using the state 25 m DEM
(DPIPWE) as part of the Landscape Logic project (www.landscapelogic.org.au).
Areas with Mean Jan Temp below 14°C omitted from map



Copyright Ag Logic, 2012
Datum GDA94, zone UTM 55G

Ag Logic accepts no responsibility for damage, loss or injury resulting from use of this map